

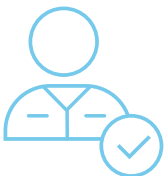
# OPENSPR™

## PUBLISH FASTER WITH BINDING KINETICS & AFFINITY ON YOUR BENCHTOP



### BENCHTOP

Avoid costly & inconvenient core facilities with our affordable benchtop solution



### USER-FRIENDLY

Train anyone in your lab to become an SPR expert with our user-friendly solution



### REAL-TIME DATA

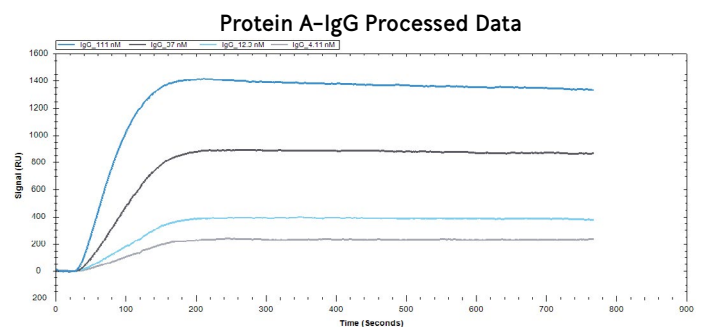
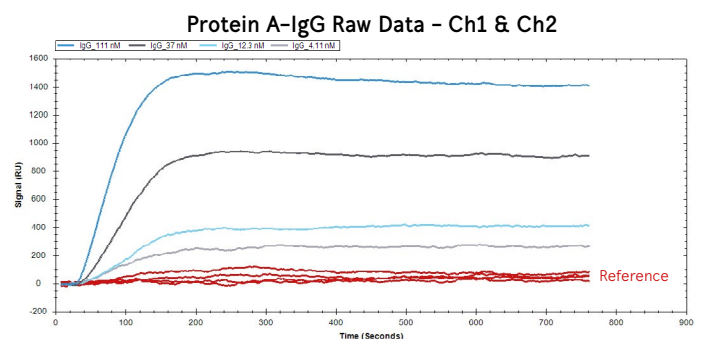
Publish faster with label-free binding kinetics & affinity data



### LOW MAINTENANCE

Forget about expensive service contracts so you can focus on your research

FIND THE DATA THAT YOUR PUBLICATION IS MISSING



## SENSORS

SAVE TIME AND OPTIMIZE EASILY WITH A WIDE-RANGE OF AFFORDABLE SENSOR CHIPS:

- Plain Gold
- Carboxyl
- NTA
- Streptavidin
- Biotin
- GST
- Protein A
- Amine
- Thiol
- Liposome Binding (LIP)
- Hydrophobic (MEM)

*High Sensitivity Sensors available for demanding applications*



Nicoya Lifesciences' OpenSPR™

## TECHNICAL SPECS

### PERFORMANCE

Association Rate ( $k_{on}$ )	$1 \times 10^3 - 1 \times 10^7$ 1/M*s
Dissociation Rate ( $k_{off}$ )	$0.1 - 1 \times 10^{-5}$ 1/s
Affinity Range ( $K_D$ )	mM-pM

### HARDWARE SPECS

# of Channels	2
Flow Rate	5-200 $\mu$ L/min
Injection	Semi-Automated
Injection Volume	5-100 $\mu$ L
Autosampler	Optional upgrade to OpenSPR-XT
Temperature Range	10°C-40°C (max 10°C<ambient)
Temperature Precision	+/- 0.25°C
Buffer Switching	3 ports available, automated switching
Instrument Size	46 x 34 x 21 cm
Weight	42 lbs
File Output	CSV, Tracedrawer

## APPLICATIONS

- Kinetics/affinity characterization
- Competition assays
- Target identification
- Epitope mapping
- Screening
- Yes/No binding
- Concentration

## COMPATIBLE WITH

- Proteins
- Lipids
- Carbohydrates
- Antibodies
- Nucleic acids
- Small molecules
- Cells
- Viruses
- Nanoparticles
- & more

ACCELERATE YOUR RESEARCH & PUBLISH FASTER. SPEAK TO AN APPLICATION SCIENTIST TODAY:

INFO@NICOYALIFE.COM  
1-877-673-6777  
[WWW.NICOYALIFE.COM](http://WWW.NICOYALIFE.COM)



USED BY +500 INNOVATIVE RESEARCHERS WORLDWIDE



UCLA



Yale

Berkeley  
UNIVERSITY OF CALIFORNIA