



OPENSPR™

NOVARTIS, PFIZER, & MERCK RELY ON SPR. KEEP YOUR STUDENTS AHEAD.

BENEFITS FOR STUDENTS



Gain hands-on experience with industry standard technique



Build your résumé and increase employability

FOR INSTRUCTORS

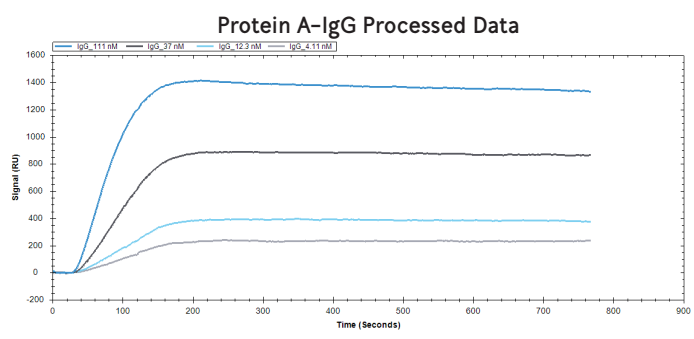
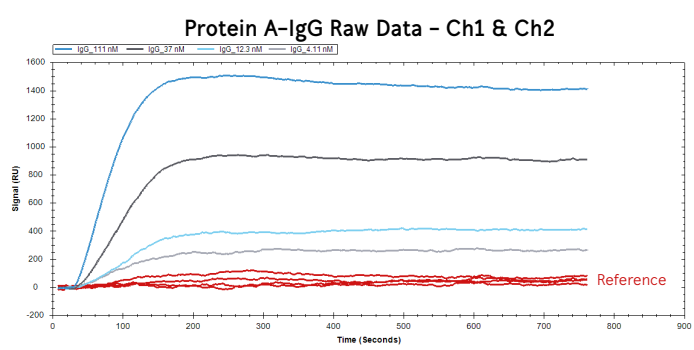


Very affordable with minimal maintenance costs



Predesigned labs to minimize your workload

FIND THE DATA THAT YOUR PUBLICATION IS MISSING



SENSORS

SAVE TIME AND OPTIMIZE EASILY WITH A WIDE-RANGE OF AFFORDABLE SENSOR CHIPS:

- Plain Gold
- Carboxyl
- NTA
- Streptavidin
- Biotin
- GST
- Protein A
- Amine
- Thiol
- Liposome Binding (LIP)
- Hydrophobic (MEM)



Nicoya Lifesciences' OpenSPR™

TECHNICAL SPECS

PERFORMANCE

Association Rate (k_{on})	$1 \times 10^3 - 1 \times 10^7$ 1/M*s
Dissociation Rate (k_{off})	$0.1 - 1 \times 10^{-5}$ 1/s
Affinity Range (K_D)	mM-pM

HARDWARE SPECS

# of Channels	2
Flow Rate	5-200 μ L/min
Injection	Semi-Automated
Injection Volume	5-100 μ L
Autosampler	Optional upgrade to OpenSPR-XT
Temperature Range	10°C-40°C (max 10°C<ambient)
Temperature Precision	+/- 0.25°C
Buffer Switching	3 ports available, automated switching
Instrument Size	48cm x 28cm x 23cm
Weight	42 lbs
File Output	CSV, Tracedrawer

APPLICATIONS

- Kinetics/affinity characterization
- Competition assays
- Target identification
- Epitope mapping
- Screening
- Yes/No binding
- Concentration

COMPATIBLE WITH

- Proteins
- Lipids
- Carbohydrates
- Antibodies
- Nucleic acids
- Small molecules
- Cells
- Viruses
- Nanoparticles
- & more

ACCELERATE YOUR RESEARCH & PUBLISH FASTER. SPEAK TO AN APPLICATION SCIENTIST TODAY:

INFO@NICOYALIFE.COM
1-877-673-6777
WWW.NICOYALIFE.COM

USED BY +500 INNOVATIVE RESEARCHERS WORLDWIDE



UCLA



Yale

Berkeley
UNIVERSITY OF CALIFORNIA