

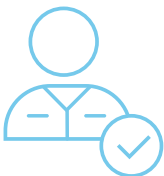
# OPENSPR™

## PUBLISH FASTER WITH BINDING KINETICS & AFFINITY ON YOUR BENCHTOP



### BENCHTOP

Avoid costly & inconvenient core facilities with our affordable benchtop solution



### USER-FRIENDLY

Train anyone in your lab to become an SPR expert with our user-friendly solution



### REAL-TIME DATA

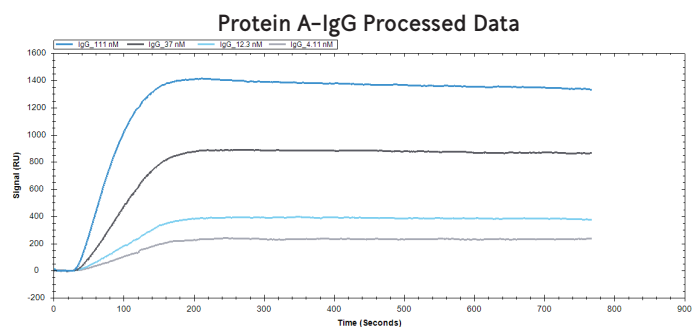
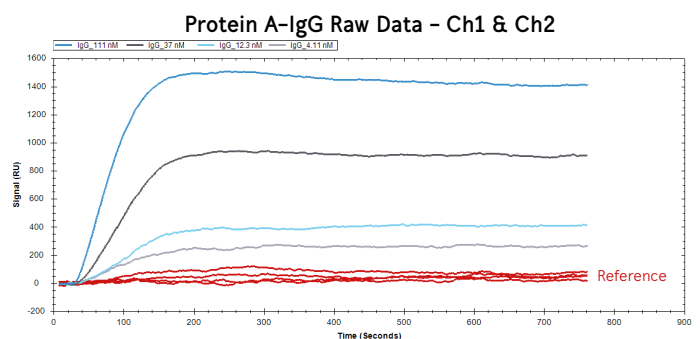
Publish faster with label-free binding kinetics & affinity data



### LOW MAINTENANCE

Forget about expensive service contracts so you can focus on your research

FIND THE DATA THAT YOUR PUBLICATION IS MISSING



## SENSORS

SAVE TIME AND OPTIMIZE EASILY WITH A WIDE-RANGE OF AFFORDABLE SENSOR CHIPS:

- Plain Gold
- Carboxyl
- NTA
- Streptavidin
- Biotin
- GST
- Protein A
- Amine
- Thiol
- Liposome Binding (LIP)
- Hydrophobic (MEM)



Nicoya Lifesciences' OpenSPR™

## TECHNICAL SPECS

### PERFORMANCE

|                                 |                                       |
|---------------------------------|---------------------------------------|
| Association Rate ( $k_{on}$ )   | $1 \times 10^3 - 1 \times 10^7$ 1/M*s |
| Dissociation Rate ( $k_{off}$ ) | $0.1 - 1 \times 10^{-5}$ 1/s          |
| Affinity Range ( $K_D$ )        | mM-pM                                 |

### HARDWARE SPECS

|                       |  |
|-----------------------|--|
| # of Channels         | 2                                      |
| Flow Rate             | 5-200 $\mu$ L/min                      |
| Injection             | Semi-Automated                         |
| Injection Volume      | 5-100 $\mu$ L                          |
| Autosampler           | Optional upgrade to OpenSPR-XT         |
| Temperature Range     | 10°C-40°C (max 10°C<ambient)           |
| Temperature Precision | +/- 0.25°C                             |
| Buffer Switching      | 3 ports available, automated switching |
| Instrument Size       | 48cm x 28cm x 23cm                     |
| Weight                | 42 lbs                                 |
| File Output           | CSV, Tracedrawer                       |

## APPLICATIONS

- Kinetics/affinity characterization
- Competition assays
- Target identification
- Epitope mapping
- Screening
- Yes/No binding
- Concentration

## COMPATIBLE WITH

- Proteins
- Lipids
- Carbohydrates
- Antibodies
- Nucleic acids
- Small molecules
- Cells
- Viruses
- Nanoparticles
- & more

ACCELERATE YOUR RESEARCH  
& PUBLISH FASTER. SPEAK TO  
AN APPLICATION SCIENTIST TODAY:

INFO@NICOYALIFE.COM  
1-877-673-6777  
WWW.NICOYALIFE.COM

USED BY +500 INNOVATIVE RESEARCHERS WORLDWIDE



UCLA



Yale

Berkeley  
UNIVERSITY OF CALIFORNIA