

# OpenSPR™

*Data Rich Binding Kinetics On Your Bench*

## Benefits



### BENCHTOP

Avoid costly & inconvenient core facilities with our affordable benchtop solution



### REAL-TIME DATA

Publish faster with label-free binding kinetics & affinity data



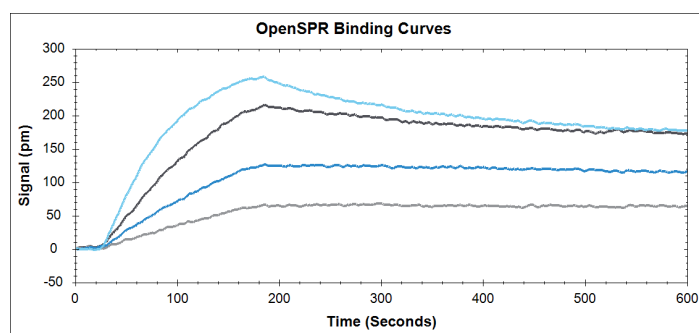
### USER-FRIENDLY

Train anyone in your lab to become an SPR expert with our user-friendly solution



### LOW MAINTENANCE

Forget about expensive service contracts so you can focus on your research

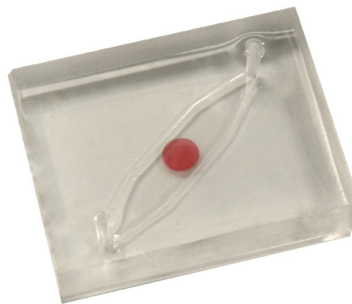


*Find the data you're missing.*

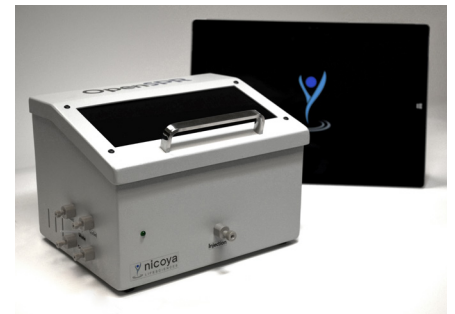
## Sensors

Optimize easily with a wide-range of affordable sensor chips:

- Plain Gold
- COOH
- NTA
- Streptavidin
- Biotin
- Amine
- LIP (liposome binding)
- MEM (hydrophobic)
- GST
- Thiol



Nanogold Sensor Chip  
& Flow Cell



Nicoya's OpenSPR™

## Technical Specifications

<b>Association Rate (<math>k_a</math>)</b>	$10^3$ to $10^7$ $M^{-1} s^{-1}$
<b>Dissociation Rate (<math>k_d</math>)</b>	$10^{-2}$ to $10^{-5}$ $s^{-1}$
<b>Affinity Range (<math>K_D</math>)</b>	pM - mM
<b>Molecular Detection Limit</b>	1.0 pg/mm <sup>2</sup>
<b>Sample Volume</b>	20µL - 500µL
<b>Temperature Control</b>	upgradable to 4-40°C
<b>Pump Rate</b>	20-150 µL/min
<b>Instrument Size</b>	16 x 21 x 12 cm
<b>File Output</b>	CSV, TraceDrawer

## Applications

- Kinetics/affinity characterization
- Competition assays
- Target identification
- Epitope mapping
- Screening
- Yes/No binding
- Concentration

## Compatible With

- Proteins
- Antibodies
- Nucleic acids
- Small molecules
- Carbohydrates
- Lipids
- Cells
- Viruses
- Nanoparticles
- & more

Visit our [website](#) or [contact us](#) today to learn more.

info@nicoyalife.com  
1-877-673-6777  
www.nicoyalife.com



/nicoya-lifesciences



@Nicoya\_Life



@nicoyalifesciences



@NicoyaLifesciences

You're in good company.

**UCLA**



THE SCRIPPS RESEARCH INSTITUTE®

**Yale**



UNIVERSITY OF  
**TORONTO**

**MICHIGAN STATE**  
UNIVERSITY



**JOHNS HOPKINS**  
UNIVERSITY